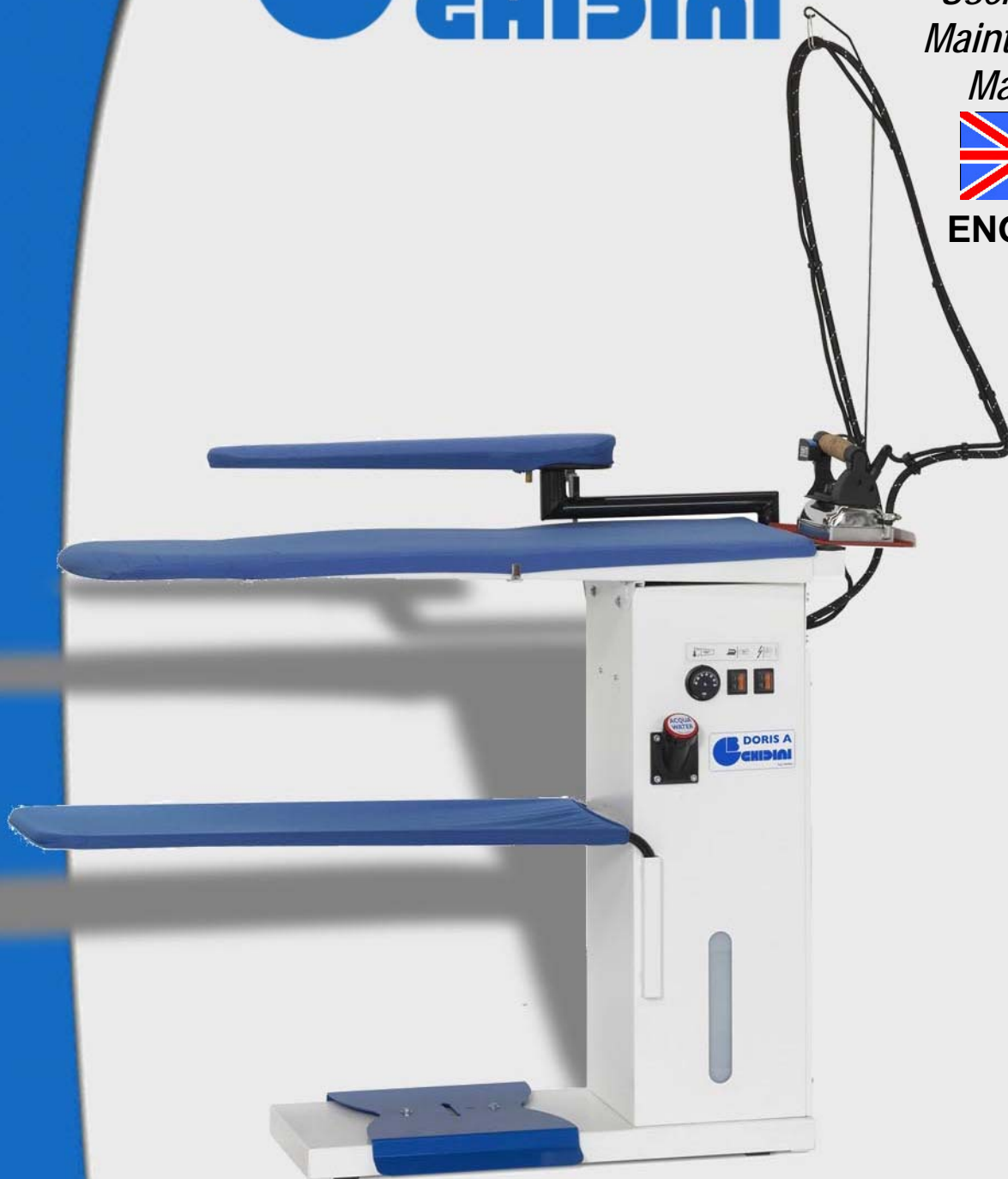



DORIS-A '09 GHIDINI

*User's and
Maintenance
Manual*



ENGLISH



<i>Manufacturer</i>	GHIDINI BENVENUTO s.r.l.
<i>Product</i>	Ironing table – DORIS-A
<i>Year</i>	2009
<i>Certification</i>	

CONTENTS

1	INTRODUCTION	10	OVERALL DIMENSIONS AND DRAWINGS
2	GENERAL DESCRIPTION	11	HAZARDOUS USE
3	MACHINE IDENTIFICATION	12	MAINTENANCE PROCEDURES
4	TECHNICAL FEATURES	13	DISPOSAL
5	MACHINE COMPONENTS	14	HOW TO ORDER SPARE PARTS
6	MACHINE UNPACKING AND INSTALLATION	15	HANDLING AND TRANSPORT
7	INSTRUCTIONS FOR USE	16	WARRANTY
8	TROUBLESHOOTING AND SOLVING	17	CONFORMITY DECLARATION
9	PRECAUTIONS		

1 INTRODUCTION

The present user's and maintenance manual refers to the ironing table "Doris-A".

It is possible to receive the latest release from our Technical Commercial Department or by visiting our website www.ghidini-gb.it. The present user's and maintenance manual contains important information for the operator's health safeguard and safety.

This manual has to be read and kept carefully, in order to be always at the operator's disposal in case of need.

Ghidini s.r.l. cannot be held liable for any damage to things or injury to persons caused by improper use of the machine in contrast with these instructions.

Any possible modifications effected on the components of the machine or its different use without prior written authorization by Ghidini s.r.l., relieve the latter of injury to persons and / or damages to things, voiding any warranty bindings, as well.

2 GENERAL DESCRIPTION

Doris-A is a complete ironing table, which doesn't require any supporting equipment for its operation, except for an external power supply.

The machine features: a broad universal ironing board and a sleeve shape, both of which are padded, electrically heated and equipped with a vacuum device, a garment tray, a control panel to adjust the board temperature and to operate the different working units, a professional steam iron with built-in boiler, a water feeding pump and a tank, enabling to iron several hours without having to refill the boiler with new water.

Thanks to its operation controlled by pedals on both sides, this very user-friendly and efficient ironing table is also suitable for left-handers.

3 MACHINE IDENTIFICATION

A tag placed on one side of the machine indicates type, serial number, year of construction and the voltage of the machine.

4 TECHNICAL FEATURES

TECHNICAL FEATURES	
Power supply	230V – 1ph / 50 Hz
Power consumption	3 kW
Sound intensity level	< 70 dB(A)
Working temperature	+ 5 ÷ + 80 °C
Working humidity	90 % max.
Storing temperature	- 20 ÷ + 50 °C
Net dimension	1380 x 380 x 930 mm.
Net weight	42 Kg
Overall dimensions (packaging included)	1300 x 520 x 1020 mm
Gross weight (packaging included)	45 Kg

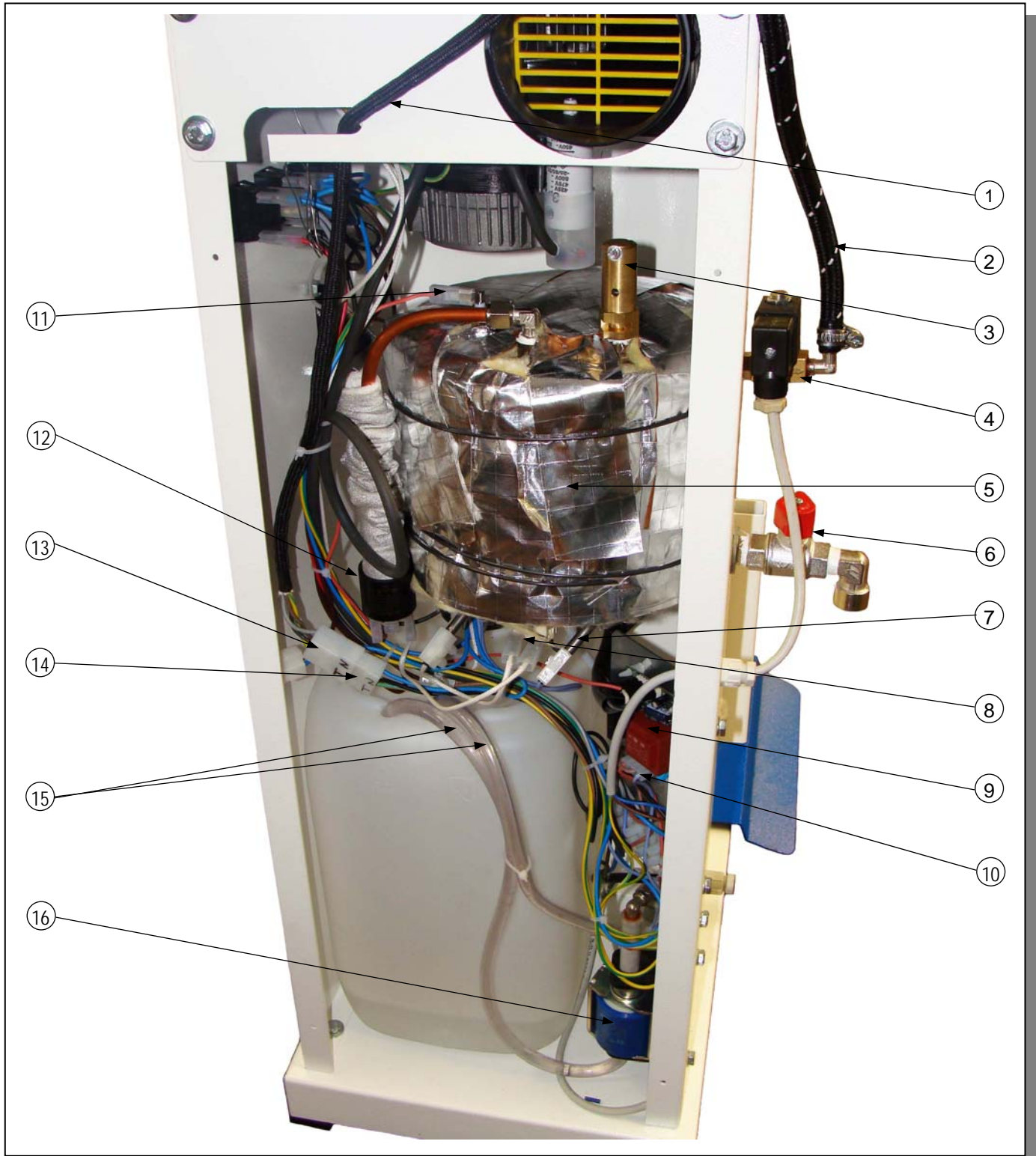
WARNING: The machine must not be supplied with different voltages than those indicated on the table.

5 MACHINE COMPONENTS

The machine features the following main components:

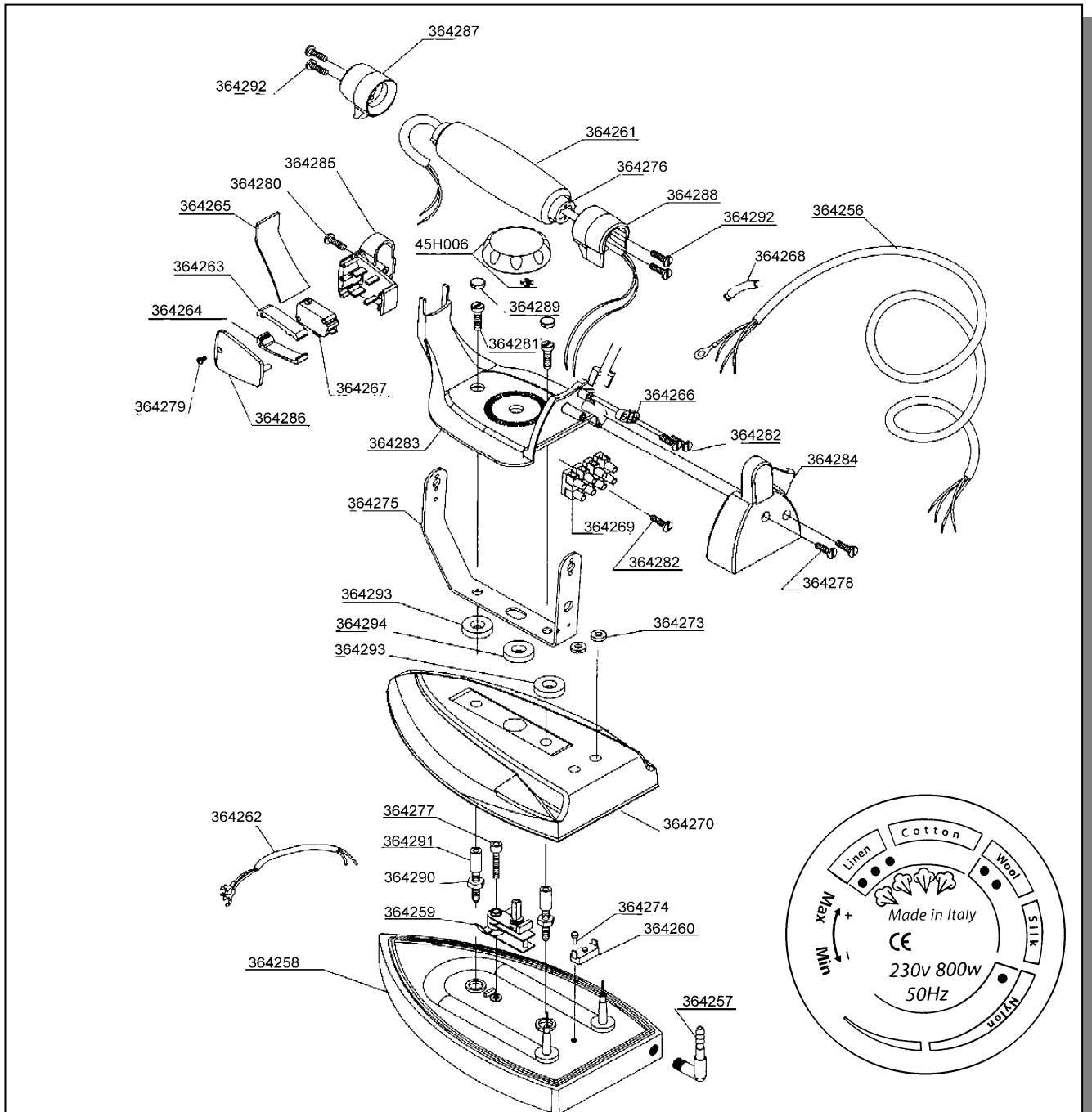


Pos.	ARTICLE	DESCRIPTION	Pos.	ARTICLE	DESCRIPTION
1	Z14H06	Sleeve shape joint	11	06D034	Water feeding hose
2	163472	Sleeve shape	12	163489	Board
3	163473	Sleeve shape plate	13	163480	Board plate
4	Z27P33	Sleeve shape padding	14	Z27P32	Board padding
5	534292	Antenna	15	163487	Frame Doris-A
6	25A001	Silicone pad for iron rest	16	173443	Tubular support for garment tray
7	163488	Rear panel	17	274208	Garment tray cloth
8	Z01S10	Steam iron mod. K	18	163484	Vacuum control pedal
9	165037	Water tank	19	163486	Bedplate
10	163485	Iron rest tray			



Pos.	ARTICLE	DESCRIPTION	Pos.	ARTICLE	DESCRIPTION
1	46B001	Electric cable for steam iron	9	25L043	Printed circuit board
2	07A001	Steam hose 2.4 m	10	30A001	PCB-wiring
3	38S001	Safety relief valve	11	49E005	Boiler probe
4	39B042	Steam solenoid valve	12	45G012	Pressure switch
5	201018	Boiler complete with heater 1450W	13	28D027	Iron plug
	201011	Boiler drum	14	28D026	Steam iron socket
6	37A010	Boiler discharge cock	15	06D030	Hoses for water feeding/recovery
7	212035	Boiler heater 1450W	16	Z07P14	Water pump kit
8	45B018	Safety thermostat for boiler heater			

Steam iron mod. K art. Z18D00



ARTICLE	DESCRIPTION	ARTICLE	DESCRIPTION	ARTICLE	DESCRIPTION
364273	Cable holder for table heater	364278	Self-tapping screw for rear handle	364287	Front handle support
364256	Electric cable for steam iron	364279	Screw for iron microswitch	364288	Rear handle support
364274	Thermostat screw	364280	Screw for microswitch holder 3,5 x 19 AU	364289	Screw caps for iron
364257	Angle for hose fitting out of nickel brass	364281	Fixing screw for handle M5 x 10 ZNB	364290	Brass washer/spacer
364258	Finished iron plate	364282	Screw for terminal board	364291	Brass spacer male female
364259	Adjustable thermostat	364283	Handle cover	364267	Complete iron microswitch
364260	Thermostat with manual reset	364284	Rear handle for iron	364292	Handle fixing screw
364261	Cork handle	364285	Iron switch holder	45H006	Knob out of black bakelite
364275	Bracket for steam iron	364286	Cover for switch holder	364293	Screw washer to place underneath handle
364270	Steam iron hood	364263	Upper iron switch	364294	Knob washer to place underneath handle
364262	Steam iron wiring	364264	Lower iron switch	364268	Electric cable holder
364276	Insert for iron handle	364265	Bracket cover for iron	364269	4 stud terminal board
364277	Fixing screw M4 x 22 for thermostat	364266	Cable retainer for iron		

6 MACHINE UNPACKING AND INSTALLATION

WARNING: The unit must be installed, opened and repaired by fully qualified technicians only.

6.1 UNPACKING

Find the most suitable place where to put the machine, then remove the packaging. Make sure that the machine has not been damaged during the transport and the storage.

The packaging material does not require any special precautions for its disposal, for it is not dangerous or polluting at all. Please refer to the local regulations for its disposal.

6.2 MACHINE INSTALLATION

The machine has not to be anchored to the floor. For a correct use and operation, as well as for an easy maintenance, leave enough free space around the machine.

Do not place the machine in dangerous and/or explosive/inflammable areas.

6.3 ELECTRICAL WIRING

The electrical wiring must be carried out as indicated on the drawing. Check that the supply voltage and the frequency correspond to those indicated on the rating plate.

The dimensions of the supply cable must suit the machine absorption and comply with the current regulations.

It is advisable to install a switch with fuses or a circuit breaker on the line.

WARNING: After having carried out all the electrical connections, make sure that the cables are protected against any possible hits and are suitably fixed and isolated.

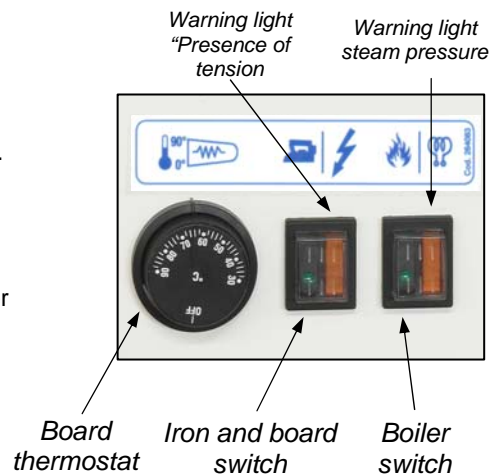
7 INSTRUCTIONS FOR USE

7.1 PUTTING INTO OPERATION

- The whole unit can be used, opened and repaired by qualified technicians only.
- It is forbidden to use the machine if flooded by liquids or in particularly aggressive or explosive/inflammable places.
- Do not ignore the dangers for the operator's health and follow the hygienic and safety regulations.
- Make sure that the electrical wiring is carried out correctly according to the current regulations, and that the fuse blocks are closed and complete of fuses.
- Verify if the machine is intact.

7.2 USE

- Make sure that the tank is filled with distilled or demineralised water.
- Switch on the machine by means of the button next to the thermostat.
- Switch on the boiler by means of the corresponding button.
- Adjust the board temperature by means of the thermostat knob.
- Turn the iron knob to the "cotton" position, symbolized by °°°.
- Wait until the boards have reached the set temperature.
- Wait until the boiler warning light switches on, signalling that the boiler has reached the necessary working pressure.
- The ironing table is now ready for use.
- Push the pedal in order to set off the vacuum on the boards.
- Check occasionally if the water level is sufficient.
- An acoustic signal will indicate when the tank has to be fed with new water.
- At the end of work, switch off the ironing table by means of the corresponding switches.



Warning: Do not unscrew the cap in order to discharge the steam at the end of the ironing operation; **never turn the boiler upside down** to empty the water left inside.

8 TROUBLESHOOTING AND SOLVING

The following diagnostic table indicates the main irregularities which can occur, their probable causes and possible solutions

In case of doubts and/or of problems which can't be solved, do not attempt to disassemble parts of the machine for the troubleshooting, but contact our Technical Department or the Ghidini-reseller, instead.

DIAGNOSTIC TABLE		
PROBLEMS	POSSIBLE CAUSES	SOLUTIONS
The vacuum option on the boards doesn't work	Pedal microswitch defect	Replace microswitch
	Plugs not inserted	Insert plugs
The boards do not heat up	Defect thermostat	Replace thermostat
	Plugs not inserted	Insert plugs

The machine doesn't turn on	Main switch turned off	<i>Make sure that the main switch is turned on, verify the fuses.</i>
	Switch turned off	<i>Turn the switch on</i>
The iron doesn't steam	Iron and boiler switches not turned on	<i>Turn on the switches</i>

9 PRECAUTIONS

Read carefully the instructions and the risks related to the use of an ironing table. The operator has to know its working functions and must clearly understand its dangers with the help of the manual.

Main electrical supply

Prior to carrying out any inspection or service on the machine, it is necessary to disconnect it from the main electrical supply. Make sure, that nobody can reconnect it during the technical service.

Every installed electrical or electronic equipment must be earthed.

In flammability

Adopt all the necessary precautions to avoid any direct contact of the machine with hot materials or flames. Put fire extinguishers near the machine for an immediate intervention in event of fire.

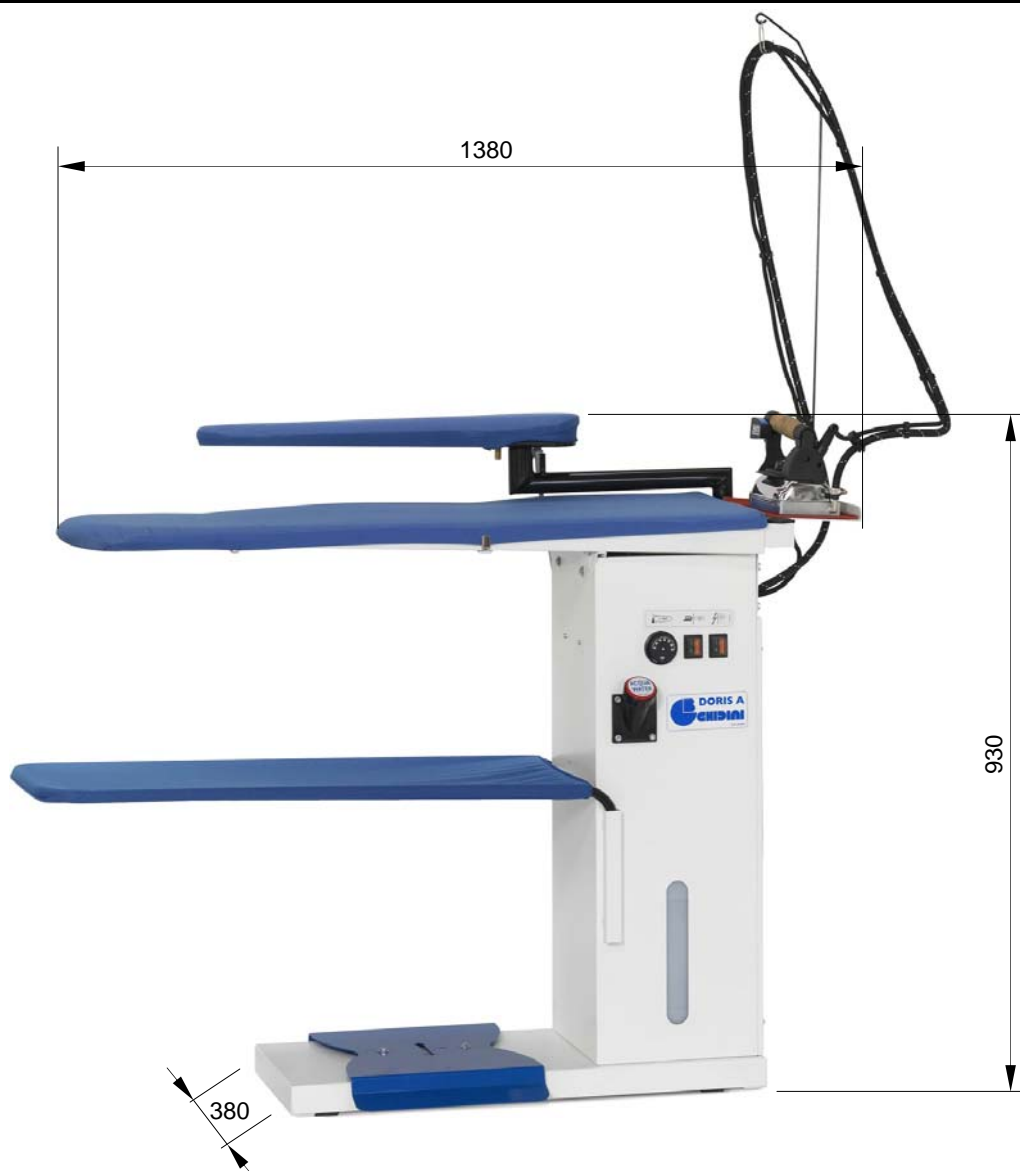
Pressure / Steam

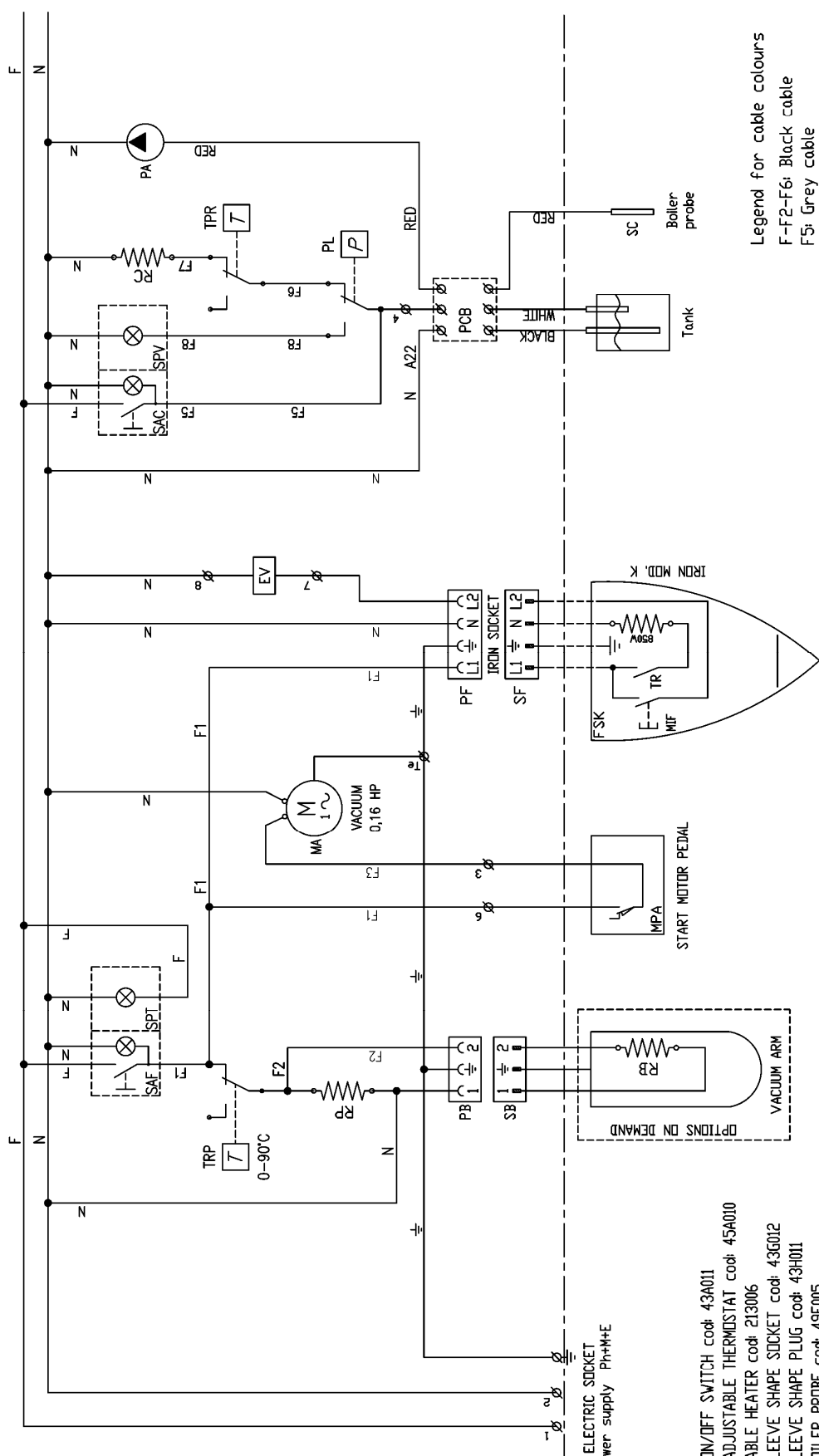
Prior to any intervention, switch the boiler first off, wait until all the pipes are cooled down and check that there are no residual pressures inside the boiler or in any branch of the hydraulic circuit, as they could cause steam spurts, in case of disassembly of fittings or other components.

Noise

The machine's noise level is not very high, as it remains under 70dB (A).

10 OVERALL DIMENSIONS AND DRAWINGS





COMPONENTS OUTSIDE ELECTRIC BOARD

ELECTRIC SOCKET
Power supply Ph+N+E

- SAF: ON/OFF SWITCH cod: 43A011
- TRP: ADJUSTABLE THERMOSTAT cod: 45A010
- RP: TABLE HEATER cod: 213006
- PB: SLEEVE SHAPE SOCKET cod: 43G012
- SB: SLEEVE SHAPE PLUG cod: 43H011
- SC: BOILER PROBE cod: 49E005
- PA: WATER PUMP cod: 42B027
- MPA: MICROSWITCH FOR SUCTION PEDAL art. 43D002
- MA: SUCTION UNIT MOTOR cod: 42D006
- EV: STEAM SOLENOID VALVE cod: 39B042
- PF: STEAM IRON SOCKET cod: 43G002
- SF: STEAM IRON PLUG cod: 43H002
- SPT: STEAM IRON MDD K cod: 2015S10
- SPT: WARNING LIGHT 'PRESENCE OF TENSION' cod: 43A011
- SAC: BOILER SWITCH WITH WARNING LIGHT cod: 43A011

- Legend for cable colours
- F-F2-F6: Black cable
 - F5: Grey cable
 - F1: Brown cable
 - F8: Red cable
 - N: Blue cable

Denominazione Ironing table - DORIS-A		Titolo SCHEMA ELETTTRICO	
Description 220V/50Hz		ELECTRICAL WIRING	
3	Data 15/05/05	Dis. NG	
2	Dis. A.G.	Dwg.	
1	Cod. B01B20	Foglio 1/1	
Modifica		Appr.	
02/16	02/16	S. Giuliano Milanese	
QUESTO DISEGNO VIENE CONSEGNATO ALL'ESPRESSIONE CONDIZIONE CHE NON VENGA SENZA NS/ CONSENSO NE RIPRODOTTO NE CEDUTO AD ALTRE DITTE.			

- RC: BOILER HEATER cod: 212035
- TPR: SAFETY THERMOSTAT FOR HEATER cod: 45B018
- PL: PRESSURE SWITCH cod: 45G012
- SPV: STEAM PRESSURE WARNING LIGHT cod: 43A011
- RB: VACUUM ARM HEATER cod: 213113



S. Giuliano Milanese

11 HAZARDOUS USE

The conformity verification according to the essential safety rules and to the provisions of the machine directive has already been carried out by filling out the specially provided checking lists, included in the technical file.

The checking lists are of two kinds:

- List of dangers (drawn from EN 1050 referring to EN 292)
- Application of the main safety features (Machine Directive– appendix. 1, part 1)

12 MAINTENANCE PROCEDURES

In case of irregularities or malfunctioning, please contact the service technician for the relevant checks.

Periodically, it is necessary to carry out the following operations:

OPERATION	WORKING HOURS
Complete emptying of the boiler	30-50

This machine does not require special equipment for check and/or maintenance operations. It is however advisable to use suitable tools and personal protections in compliance with the Italian law by decree 626/94, which have to be in good conditions (Presidential Decree 547/55), in order to avoid any damages to persons or machine components.

Make sure that the power supply is disconnected prior to any maintenance service and that the whole equipment has cooled down.

13 DISPOSAL

During the maintenance on the machine, or in case of its scrapping, please dispose carefully and correctly of any polluting components, according to the local regulations. In case of scrapping, the identification rating plate and any other document have to be destroyed.

14 HOW TO ORDER SPARE PARTS

Upon the spare parts request, please quote always:

Machine type, serial number, quantity of the requested spare parts, article number (these data can be read on the rating plate or supplied by the technical information of the machine and by the user's and maintenance manual).

For electrical components with a different voltage and frequency than V 220-380/50Hz (data available on the rating plate of the faulty component), specify the correct voltage and frequency after having mentioned the article number.

The technical data, the descriptions and pictures included in this manual are not binding.

The manufacturer reserves the right to make any necessary modification without prior notice or having to up-date the present manual.

15 HANDLING AND TRANSPORT

Before its shipment, the machine is carefully packed in a carton box. During the shipment and storing of the machine, pay particular attention to the upside indication on the packaging. Upon receipt, please check that the packing is intact and store the machine in a dry place.

16 WARRANTY

All Ghidini products are guaranteed for a maximum period of 12 months from delivery date as far as material and construction defects are concerned.

The warranty is extended as follows:

In case of malfunction of the equipment, please contact your Ghidini reseller, specifying the noticed defect, type, serial number and furthermore the operating conditions of the machine. After having received the equipment or component and after an accurate analysis, Ghidini reserve the right, whether to repair or to replace the product. If the machine is still under guarantee, the Ghidini reseller will carry out the service or replacement at Ghidini's charge. In case the returned goods are not defective, Ghidini reserve the right to charge the customer with the met expenses (shipment, etc.). The present warranty will be declared void, if the machine has been damaged due to improper use, negligence, normal wear, chemical corrosion, installation not according to the provided instructions and to the manufacturer's warnings.

Any modification, tampering and alteration on the machine or its components, carried out without prior written authorization by Ghidini, relieve the latter of any responsibility and annuls any warranty obligation. The components subject to normal wear and the perishable ones are not under warranty, as well as everything, which has not been previously explicitly indicated, or damages or expenses arising from defects of the same product.

The validity conditions of the guarantee provided by Ghidini are considered implicitly accepted upon purchase of the machine. Any possible changes to or derogations from the present guarantee are only valid prior written authorization by Ghidini.

17 CONFORMITY DECLARATION

Manufacturer: GHIDINI Company Via Tolstoj, 24 – 20098 S. Giuliano Milanese (MI) Address +39 -02 -98.24.06.00 Phone number
--

Declares that

The machine: <u>Ironing table – DORIS-A</u>

- * has been designed in compliance with the DIRECTIVES OF THE EUROPEAN COMMUNITY COUNCIL referring to machines (98/37/EC) and to low voltage (LV 73/23/CEE).
- * has been designed, as far as enforceable, in compliance with the following harmonized regulations and technical specifications:
EN 292-1/2, EN 1050, EN 982, EN 11200, EN 60947, EN 894-1/2.

Managing director	Roland Fleischmann
Product manager	Name

GHIDINI S.r.l.
Company



Signature	March 2009
	Date



Web site: <http://www.ghidini-gb.it> - E-mail: sales@ghidini-gb.it